



India Meteorological Department
(Ministry of Earth Sciences)

BULLETIN NO. 90 (ARB/01/2023)

TIME OF ISSUE: 2030 HOURS IST

DATED: 17.06.2023

FROM: INDIA METEOROLOGICAL DEPARTMENT (FAX NO. 24643965/24699216/24623220)

TO: CONTROL ROOM, NDM, MINISTRY OF HOME AFFAIRS (FAX.NO. 23093750)

CONTROL ROOM NDMA (FAX.NO. 26701729)

CABINET SECRETARIAT (FAX.NO.23012284, 23018638)

PS TO HON'BLE MINISTER FOR S & T AND EARTH SCIENCES (FAX NO.23316745)

SECRETARY, MOES (FAX NO. 24629777)

H.Q. (INTEGRATED DEFENCE STAFF AND CDS) (FAX NO. 23005137/23005147)

DIRECTOR GENERAL, DOORDARSHAN (23385843)

DIRECTOR GENERAL, AIR (23421105, 23421219)

PIB MOES (FAX NO. 23389042)

UNI (FAX NO. 23355841)

D.G. NATIONAL DISASTER RESPONSE FORCE (NDRF) (FAX NO. 26105912, 2436 3260)

DIRECTOR, PUNCTUALITY, INDIAN RAILWAYS (FAX NO. 23388503)

CHIEF SECRETARY, RAJASTHAN (FAX NO. 0141-2227114)

CHIEF SECRETARY, MADHYA PRADESH (FAX NO. 755-2441076)

CHIEF SECRETARY, GUJARAT (FAX NO. 079-23250305)

CHIEF SECRETARY, DAMAN & DIU (FAX NO. 0260-2230775)

CHIEF SECRETARY, DADRA & NAGAR HAVELI (FAX NO. 0260-2645466)

Sub: Deep Depression (Remnant of Cyclonic Storm 'Biparjoy') weakened into a depression over South Rajasthan and adjoining North Gujarat

The Deep Depression (Remnant of Cyclonic Storm 'Biparjoy') over Southwest Rajasthan and adjoining Gujarat moved east-northeastwards with a speed of 12 kmph during past 6-hours, weakened into a depression and lay centered at 1730 hours IST of today, the 17th June, 2023 over South Rajasthan and adjoining North Gujarat near latitude 25.6°N and longitude 72.5°E, about 30 km north-northwest of Jalore and 90 km south-southwest of Jodhpur.

It is very likely to continue to move east-northeastwards and maintain the intensity of Depression till forenoon of 18th June.

Warnings:

(i) Heavy Rainfall Warning (Gujarat, Rajasthan and Madhya Pradesh):

- Light to moderate rainfall at most places is likely with isolated heavy to extremely heavy rainfall **over Southwest Rajasthan** on 17th and isolated heavy to very heavy rainfall on 18th June.
- Light to moderate rainfall at most places is likely with isolated heavy to extremely heavy rainfall **over Southeast Rajasthan** on 17th & 18th June and isolated heavy to very heavy rainfall on 19th June.
- Light to moderate rainfall at most places is likely with isolated heavy rainfall **over Northeast Rajasthan** on 18th and isolated heavy to very heavy rainfall on 19th June.

- Light to moderate rainfall at most places is likely with isolated heavy to very heavy rainfall over **West Madhya Pradesh** on 19th June.
- Light to moderate rainfall at most places with isolated heavy to very heavy rainfall is likely over **Northern Districts of Gujarat region** and isolated heavy rainfall over **Northern parts of Kutch** on 17th June.

(ii) Wind warning:

Wind Warning for Rajasthan and adjoining north Gujarat

- Squally wind speed reaching 40-50 kmph gusting to 60 kmph is very likely till morning of 18th June over **South Rajasthan and adjoining North Gujarat** and decrease thereafter becoming strong wind speed reaching 25-35 kmph gusting to 45 kmph thereafter over **East Rajasthan and adjoining areas** till evening of 18th June.

(iii) Damage expected over South Rajasthan and adjoining North Gujarat districts during next 12 hours:

- Inundation of low lying areas.
- Reduction in visibility causing difficulty in surface transport in heavy rain
- Some breaches in Kutch road due to flooding.
- Damage to loose / unsecured structures.
- Minor damage to Banana, papaya, drumstick trees and horticultural crops.

(iv) Action suggested:

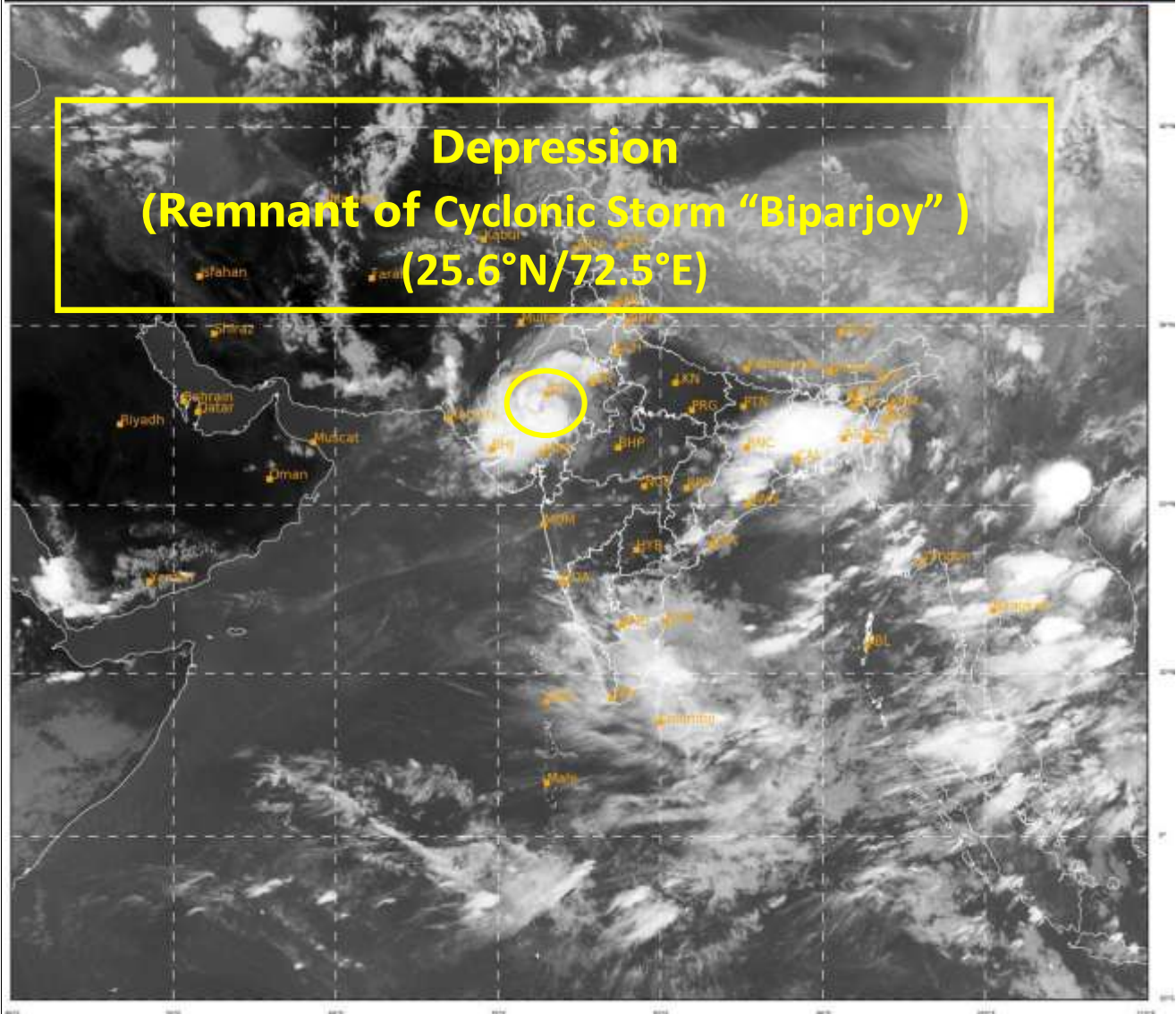
- Avoid staying in low lying areas which could be inundated due to heavy rain.
- Protect solar panels etc. from damage due to strong winds & lightning.
- Stay indoors, close windows & doors and avoid travel, if possible, during thunderstorms & gusty winds.
- Take safe shelters; do not take shelter under trees.
- Keep away from all the objects that conduct electricity during thunderstorm.
- Adventure activities & tourism trips may be avoided.

The system is under continuous surveillance and the next message will be issued at 0230 hours IST of 18th June, 2023.

(M. Sharma)
Scientist D,
Cyclone Warning Division,
New Delhi

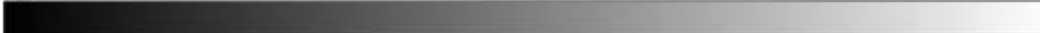
Copy to: ACWC Mumbai/ CWC Ahmedabad/MC Jaipur/MC Bhopal/RMC Nagpur

LEGEND: Heavy Rainfall: 64.5 to 115.5mm, **Very Heavy Rainfall:** 115.6 to 204.4mm **Most Places:** more than 76% of total stations, **Isolated Places:** Less than 25% of total



348

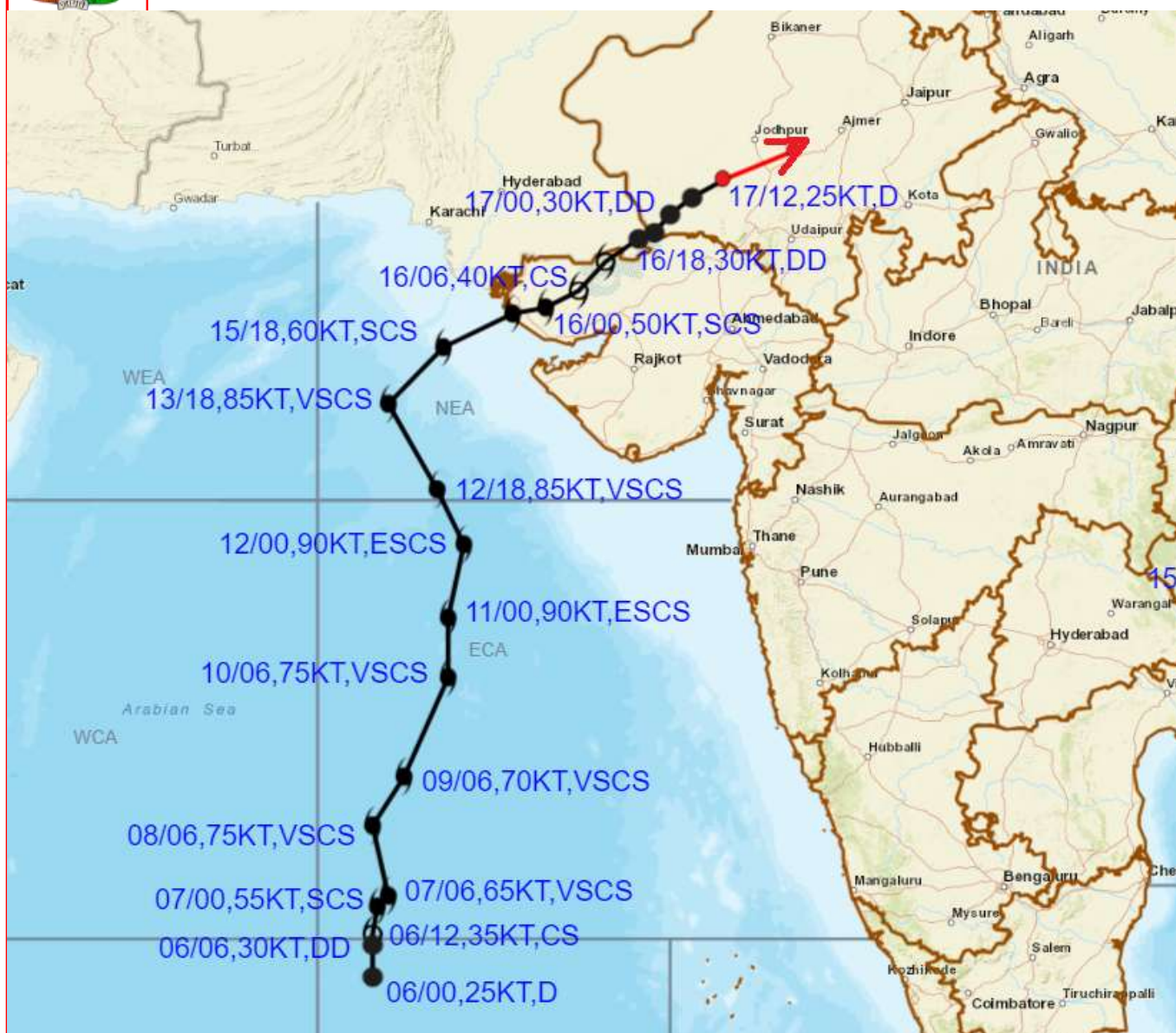
945



IMD, DELHI



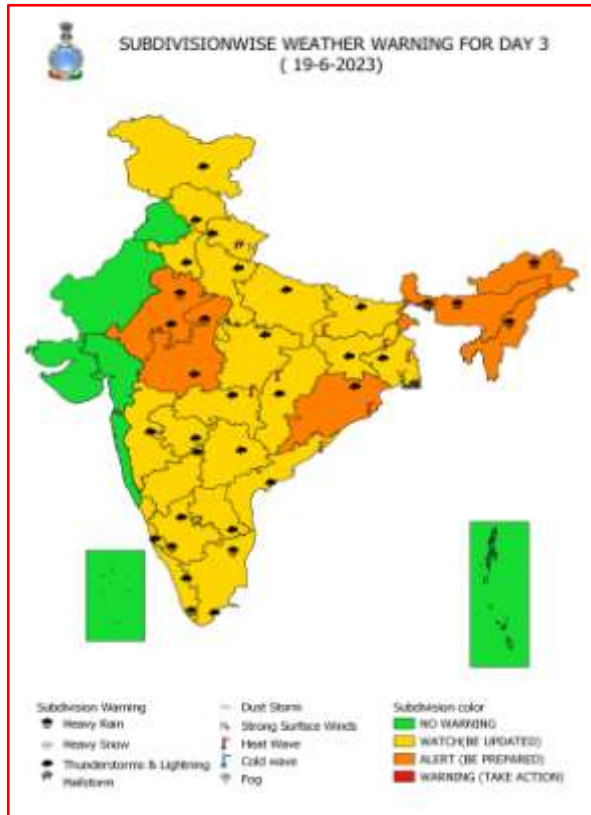
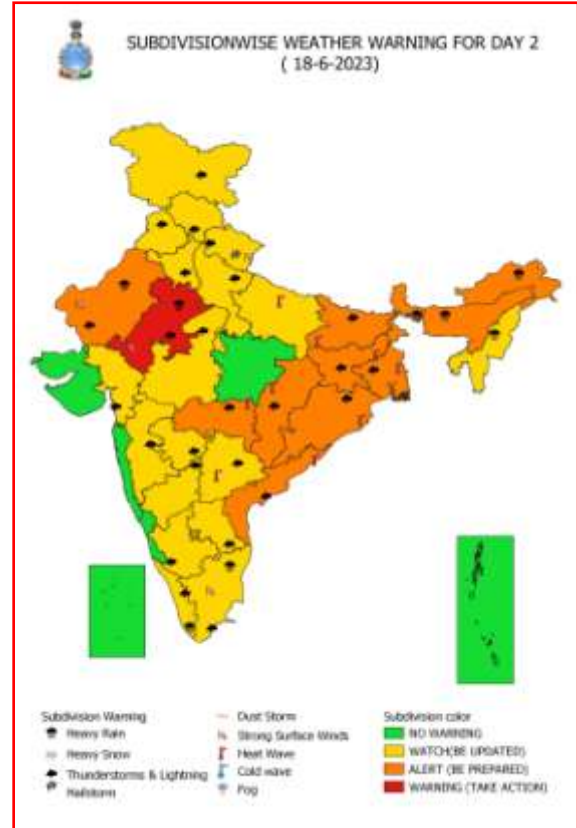
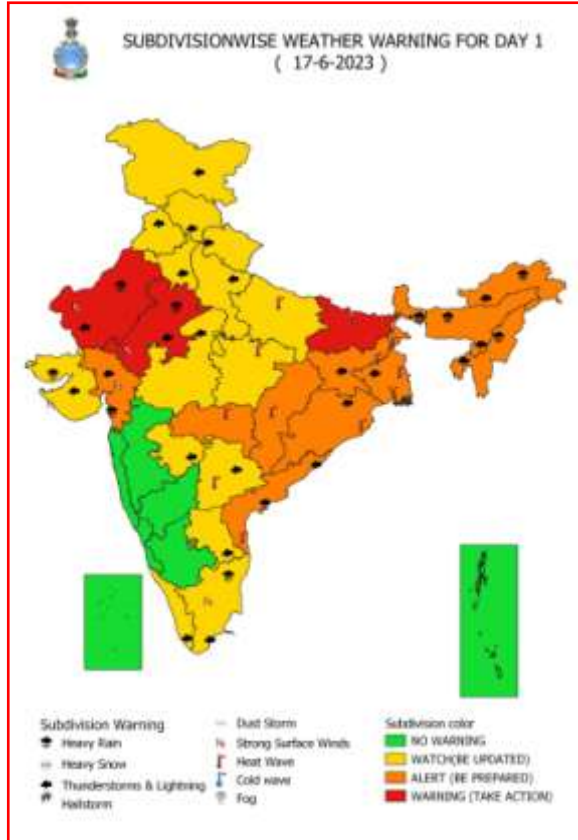
OBSERVED AND FORECAST TRACK OF DEPRESSION (REMANANT OF CYCLONIC STORM BIPARJOY) OVER SOUTH RAJASTHAN AND ADJOINING NORTH GUJARAT BASED ON 1200 UTC (1730 IST) OF 17TH JUNE 2023.



DATE/TIME IN UTC
 IST=UTC + 0530
 L: LOW PRESSURE AREA
 WML: WELL MARKED LOW PRESSURE AREA
 D: DEPRESSION (17-27 KT)
 DD: DEEP DEPRESSION (28-33 KT)
 CS: CYCLONIC STORM (34-47 KT)
 SCS: SEVERE CYCLONIC STORM (48-63KT)
 VSCS: VERY SEVERE CYCLONIC STORM (64-89 KT)
 ESCS: EXTREMELY SEVERE CYCLONIC STORM (90-119 KT)
 SuCS: SUPER CYCLONIC STORM (\geq 120 KT)

- LESS THAN 34 KT
- 34-47 KT
- \geq 48 KT
- OBSERVED TRACK
- FORECAST TRACK
- CONE OF UNCERTAINTY

All India Heavy Rainfall Warning for 17th to 18th June 2023



District-wise Heavy Rainfall Warning Maps for 17th June



District-wise Heavy Rainfall Warning Maps for 17th, 18th & 19th June for Rajasthan

